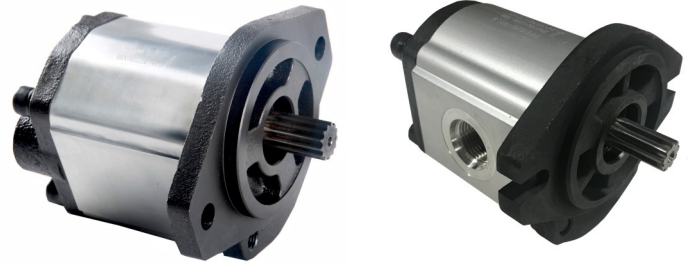


Features

- All purpose gear pump
- Cast Iron Front Flange and Rear Cover Plate, Aluminum Body
- Rotation speed up to 3500 rpm Peak
- Pressure to 250 Bar (3625 psi), Peak = 280 Bar (4060 psi)
- Built-In Relief Valve and Check Valve options available on request.



Ordering Details

P
F
EG
010-
K0.6-
2A
O10
O12
S
R-
8

Pump
Fixed
Gear
CC, Centimeters³/rev.: 4, 6, 8, 10, 12, 14, 16, 20, 23, 25, 28, 30
Shaft Style
Mounting Flange: 2A=SAE A - 2 Bolt
Pressure Port
Suction Port
Ports: S=Side Threaded, R=Rear Threaded
Rotation when looking at the shaft: L=Left Hand (CCW), R= Right Hand (CW)
Series

Keyed

Code	Shaft Dia., in.	Key Width, in.	CC/rev
K0.6	0.625	0.156	4,6,8,10,12,14,16,20,23,25, 28,30

Spline

Code	Shaft Dia., in.	Details	CC/Rev
9T.6	0.625	9T 16/32	4,6,8,10,12,14,16,20,23,25, 28,30

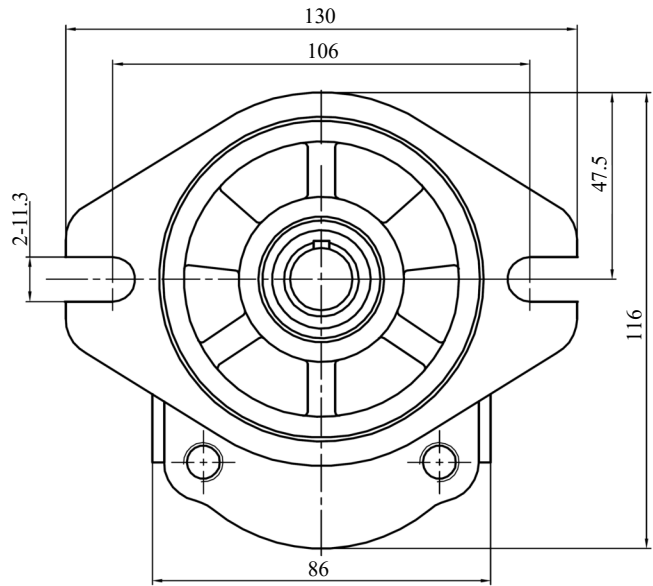
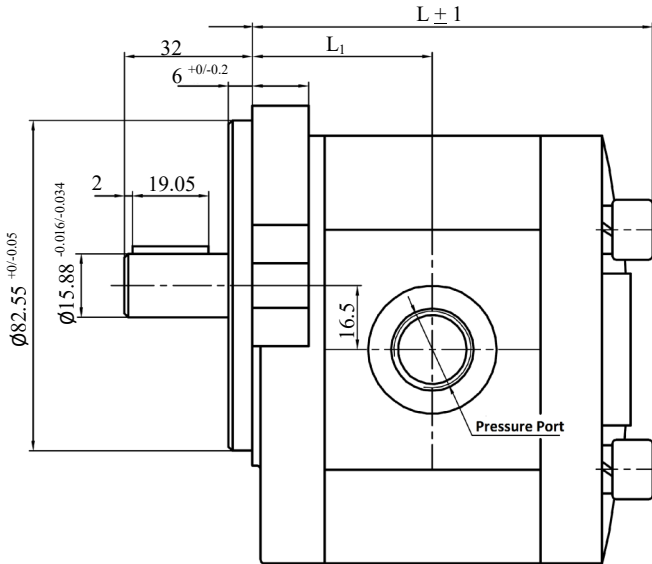
Threaded, SAE O-ring boss				
Code	Dash Size	Thread	CC/Rev.	
			Pressure	Suction
O08	-8	3/4-16	4, 6	
O10	-10	7/8-14	8,10,12,14,16,20,23,25, 28, 30	4,6
O12	-12	1 1/16-12		8,10,12,14,16,20,23,25, 28, 30

Example Part Number: PFEG010-K0.6-2AO10O12SR-8

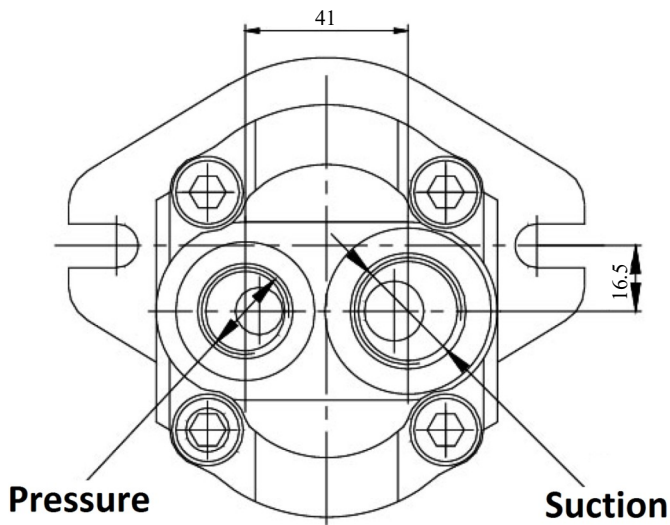
Section 1 – Technical Data and Dimensional Data

K0.6 – Keyed Shaft: Dimensions in mm

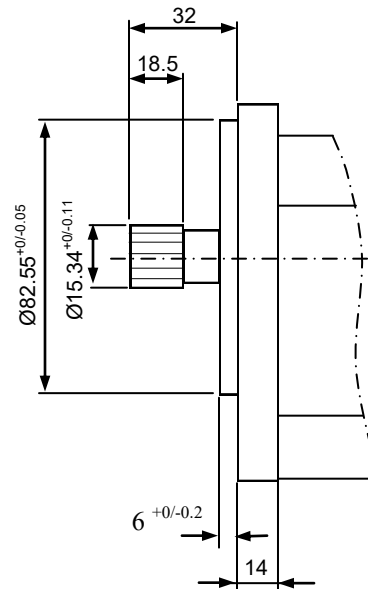
S - Side Ported



R –Rear Ported



9T.6—Spline



Displacement cc	Pressure PSI (bar)		Speed r/min			L mm	L ₁ mm	Outlet Port	Inlet Port	Weight, Kg
	Continuous	Peak	Continuous	Peak	Min					
4	3625 (250)	4060 (280)	2000	3500	500	96	43.3	-8, 3/4-16	-10, 7/8 -14	2.5
6	3625 (250)	4060 (280)	2000	3500	500	98	45	-8, 3/4-16	-10, 7/8-14	
8	3625 (250)	4060 (280)	2000	3500	500	102	46.5	-10, 7/8-14	-12, 1 1/16-12	
10	3625 (250)	4060 (280)	2000	3500	500	104	48	-10, 7/8-14	-12, 1 1/16-12	
12	3625 (250)	4060 (280)	2000	3500	500	108	49.5	-10, 7/8-14	-12, 1 1/16-12	
14	3625 (250)	4060 (280)	2000	3500	500	110	51	-10, 7/8-14	-12, 1 1/16-12	
16	3625 (250)	4060 (280)	2000	3500	500	114	52.5	-10, 7/8-14	-12, 1 1/16-12	3.0
20	3625 (250)	4060 (280)	2000	3500	500	120	56	-10, 7/8-14	-12, 1 1/16-12	
23	2900 (200)	3625 (250)	2000	3000	500	123	58	-10, 7/8-14	-12, 1 1/16-12	
25	2320 (160)	2900 (200)	2000	3000	500	128	60	-10, 7/8-14	-12, 1 1/16-12	
28	2320 (160)	2900 (200)	2000	3000	500	133	63	-10, 7/8-14	-12, 1 1/16-12	
30	2320 (160)	2900 (200)	2000	3000	500	136	64	-10, 7/8-14	-12, 1 1/16-12	